

**Relação do aço**

ACO	N	DIAM	Q	UNIT	C TOTAL
CABO	1	5,0	24	488	11712
CABO	2	5,0	86	158	13588
CABO	3	5,0	216	108	23328
CABO	4	10,0	82	VAR	VAR
CABO	5	10,0	33	260	8580
CABO	6	10,0	22	310	6820
CABO	7	10,0	26	250	6500
CABO	8	10,0	18	295	5310
CABO	9	10,0	25	240	6000
CABO	10	10,0	25	290	6950

**Resumo do aço**

ACO	DIAM	C TOTAL	PESO * 10 <sup>3</sup>
CABO	5,0	1079,3	104,1
CABO	10,0	338,8	34,1
<b>PESO TOTAL</b>			<b>138,2</b>

Vol. de concreto total (C-25) = 14,99 m<sup>3</sup>  
 Área de forma total = 30,27 m<sup>2</sup>

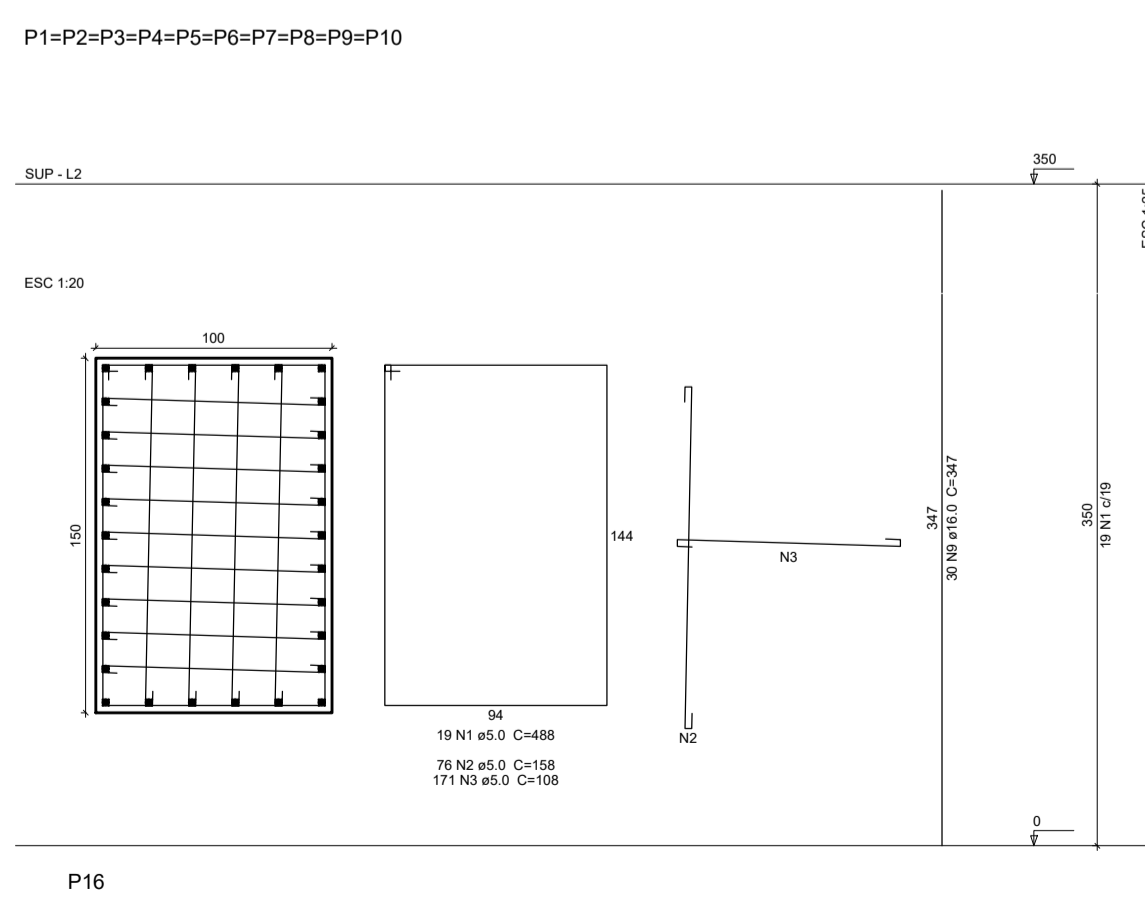
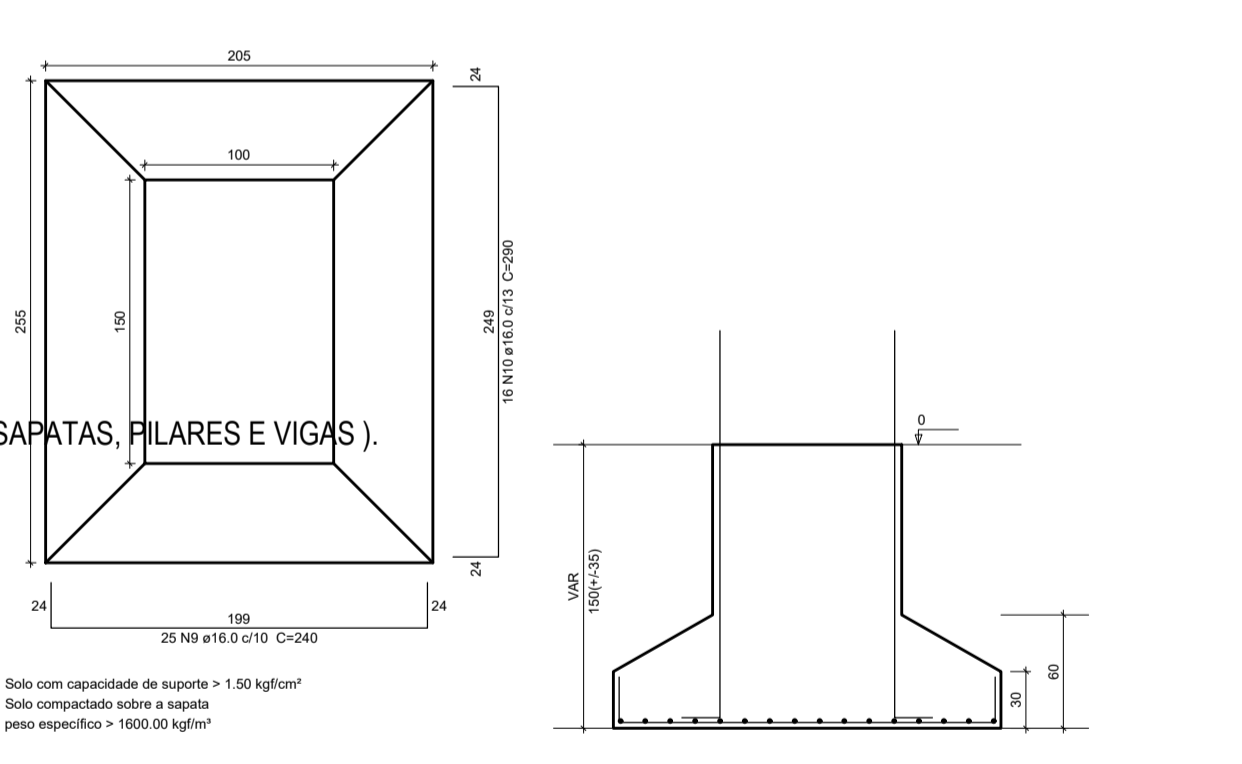
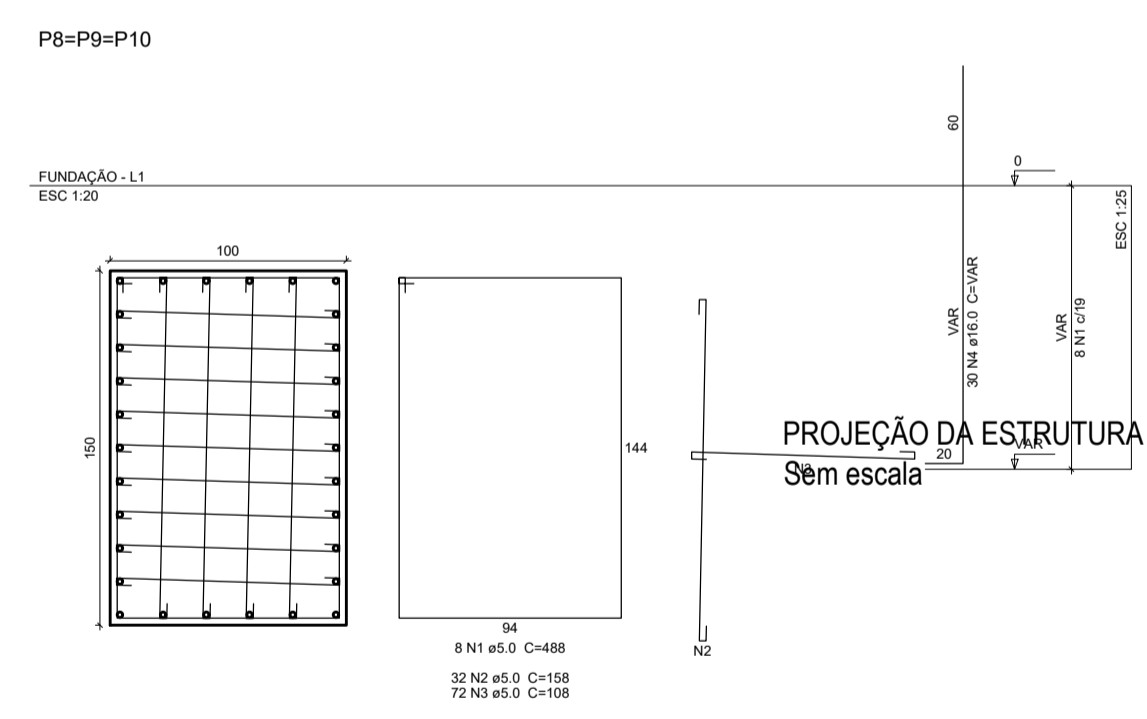
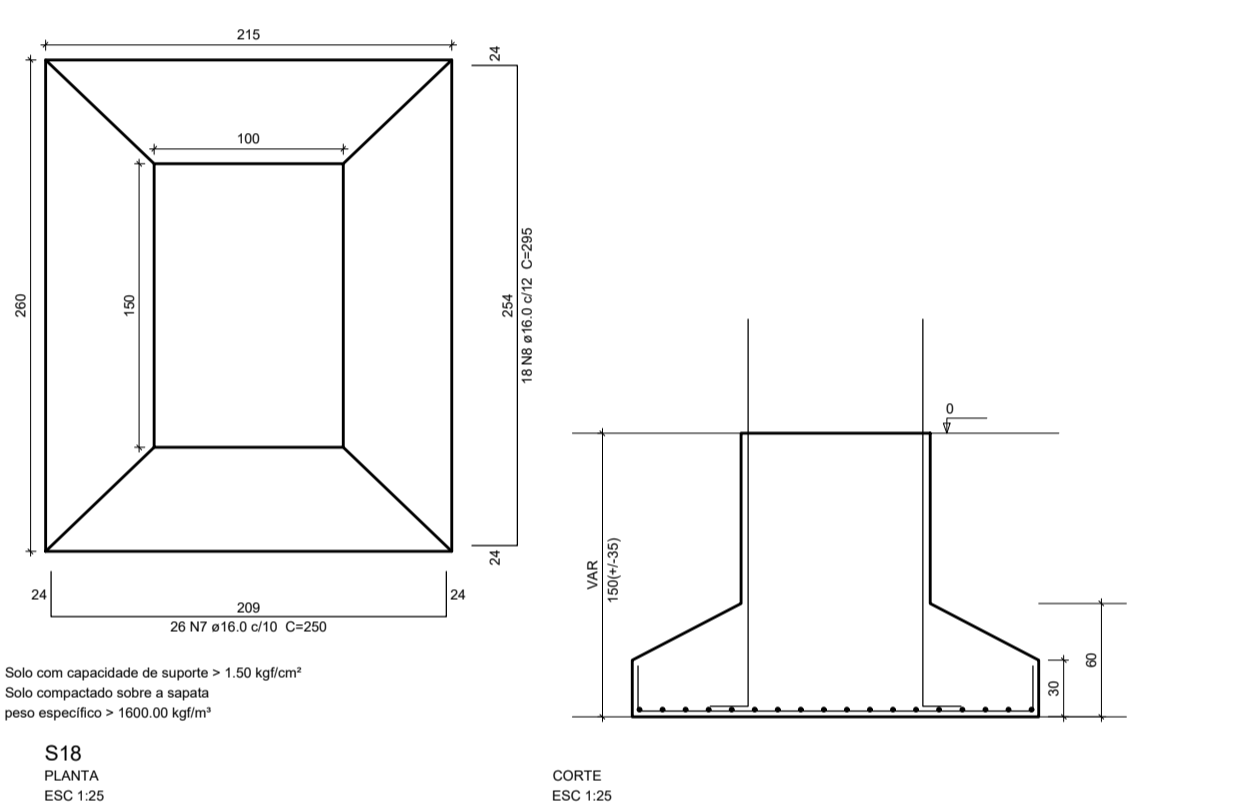
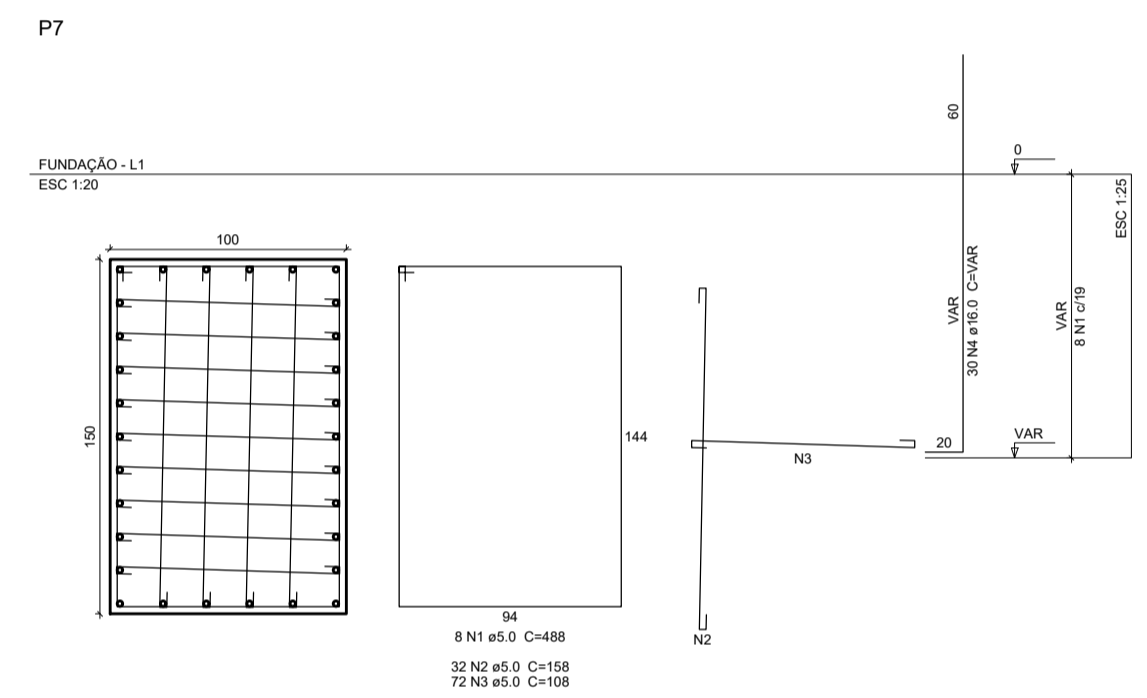
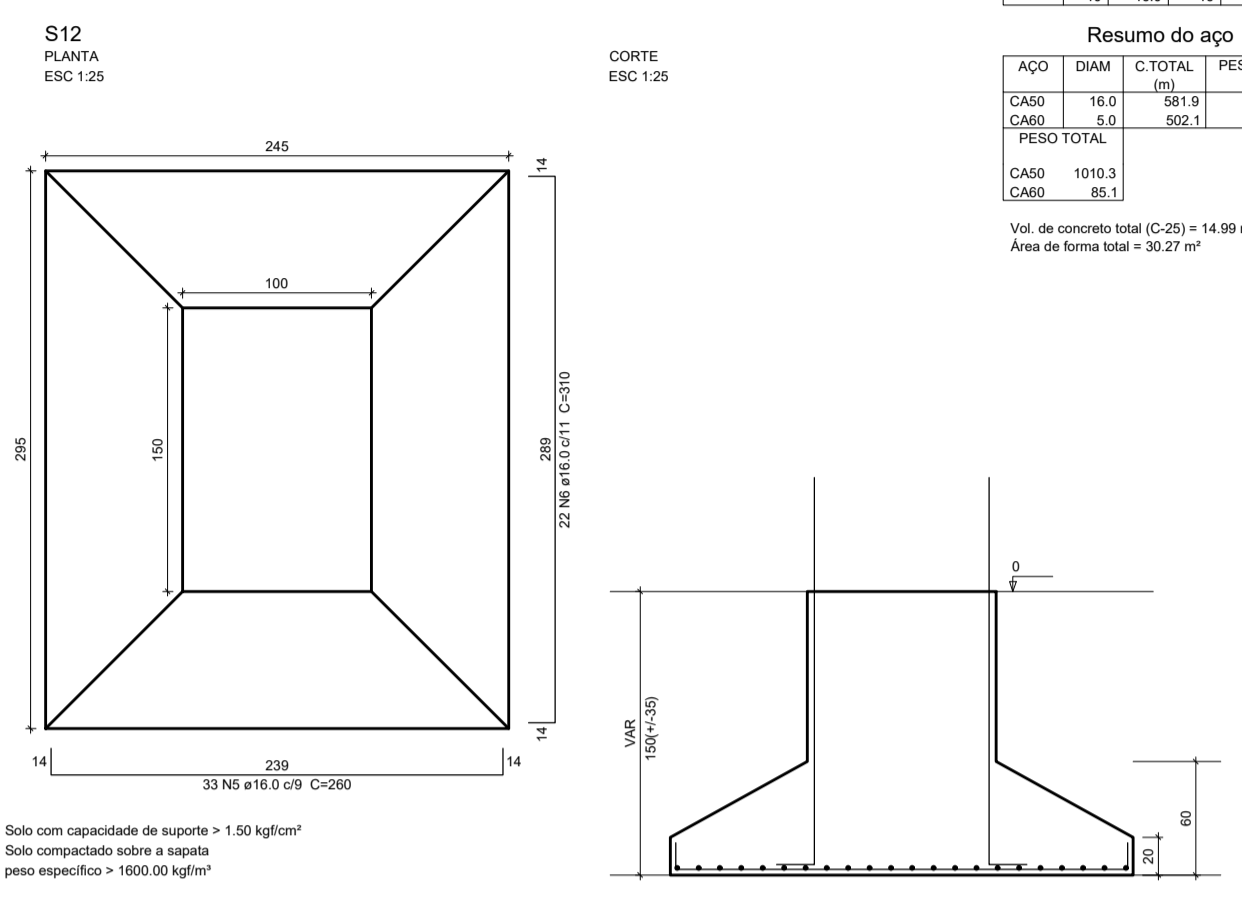
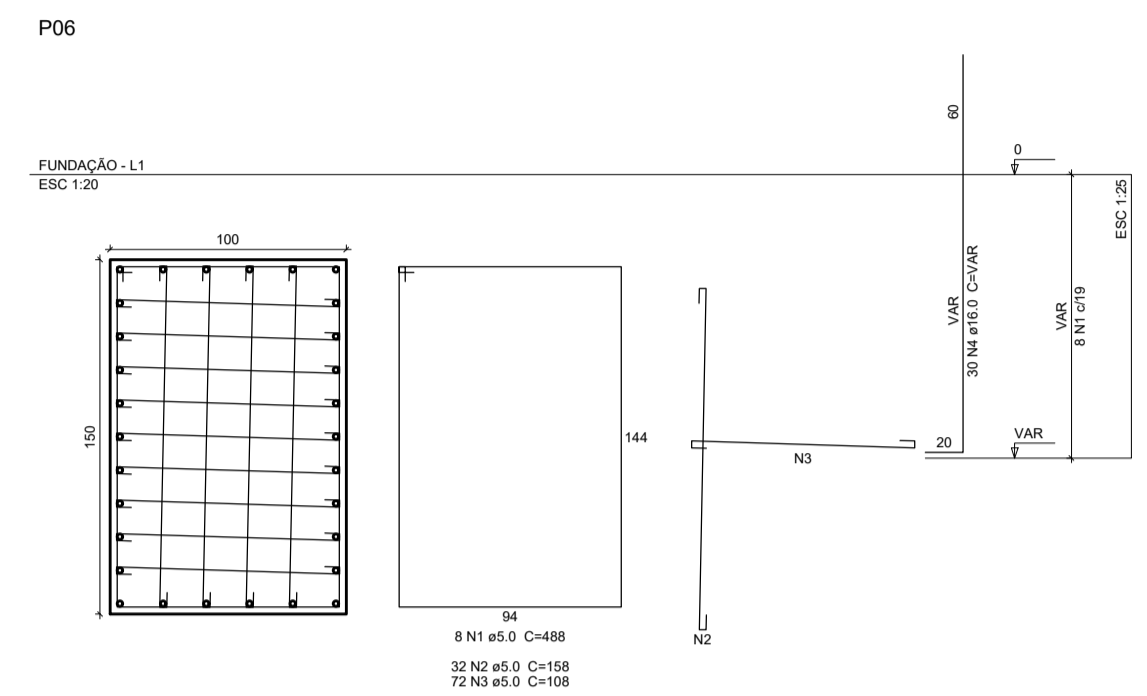
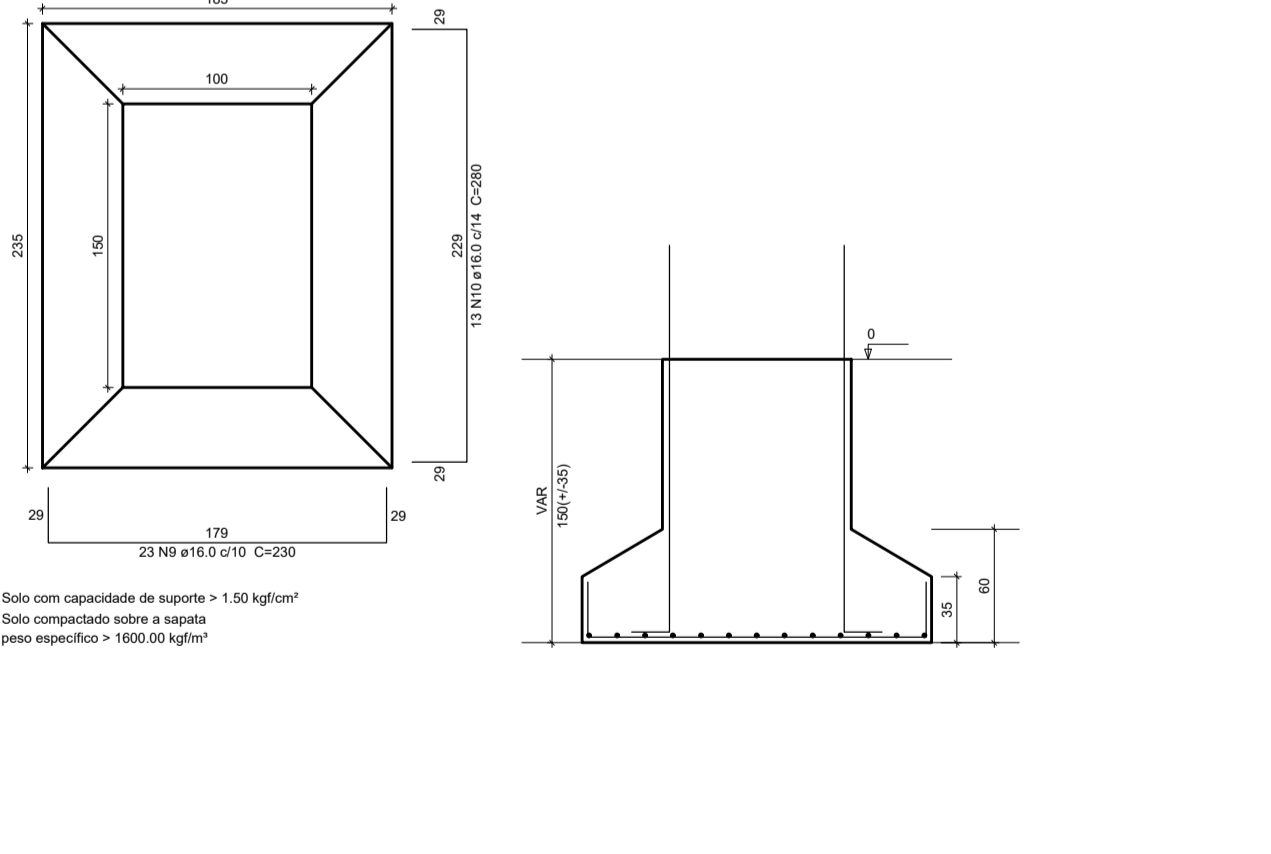
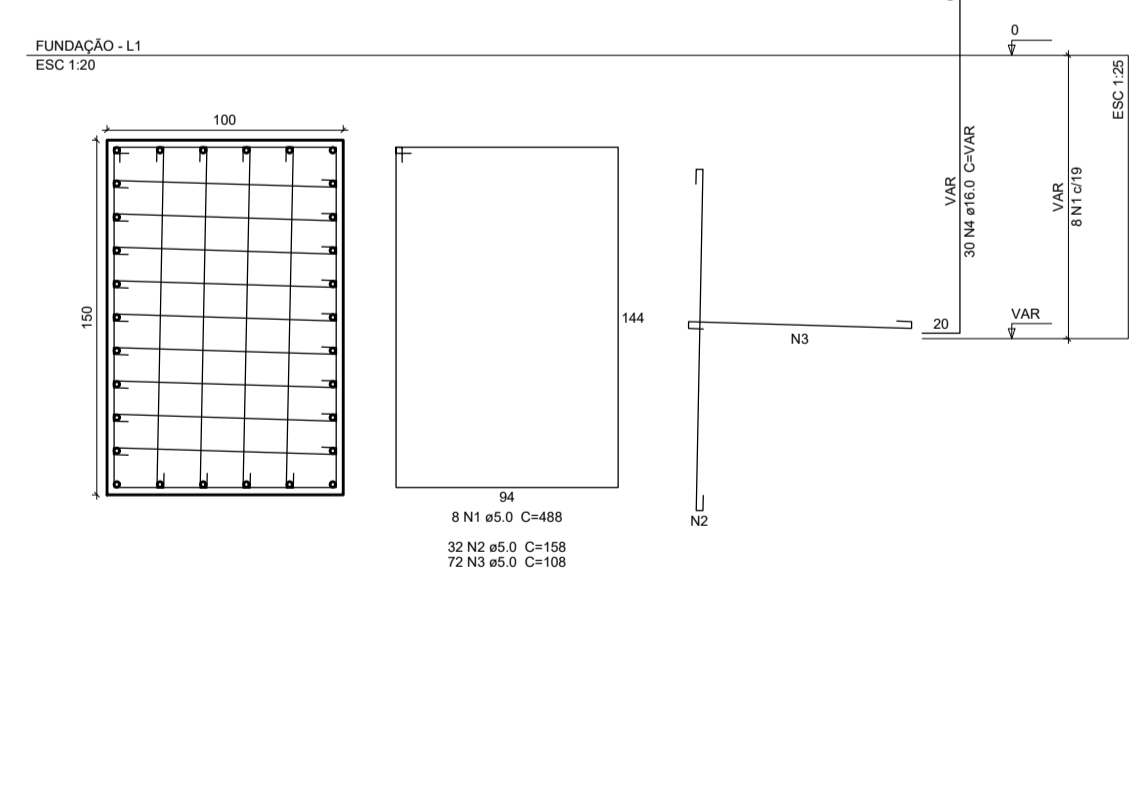
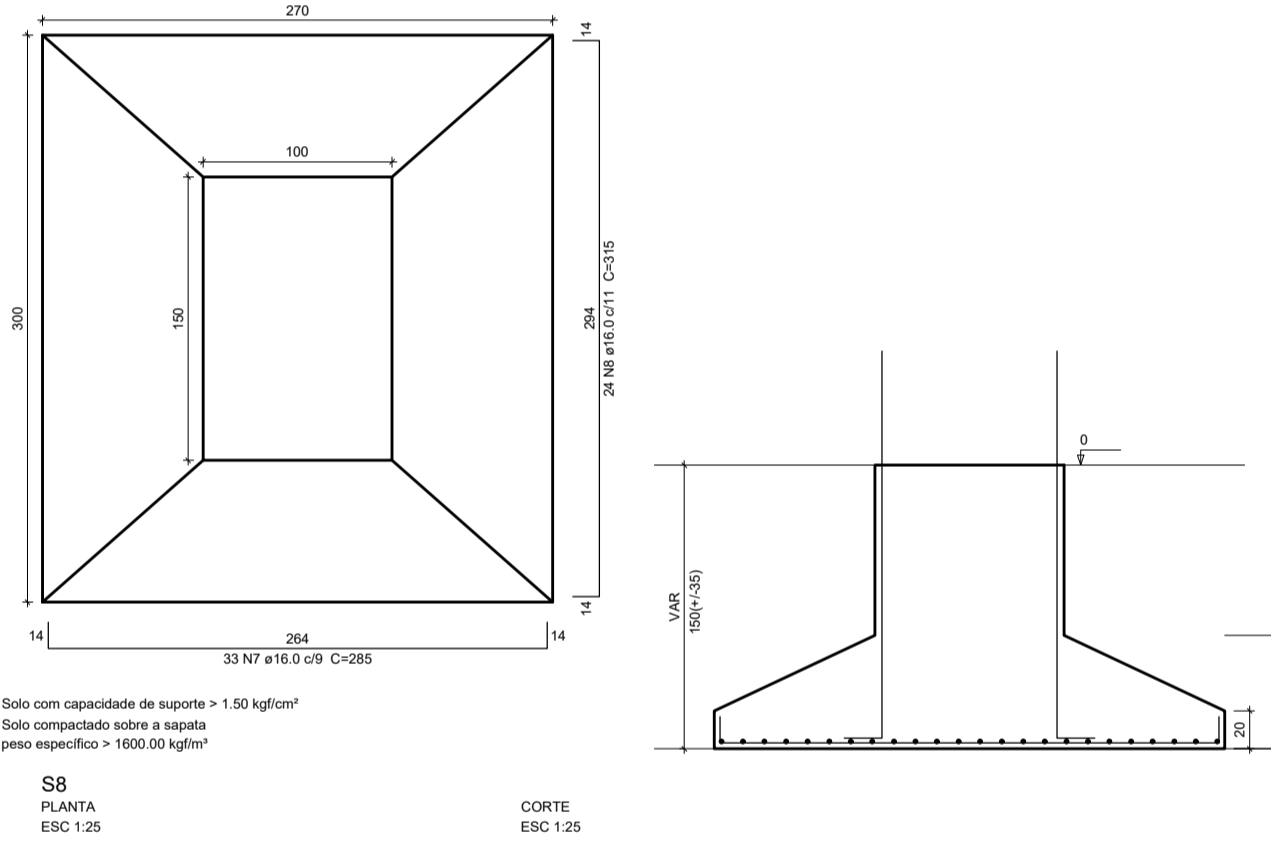
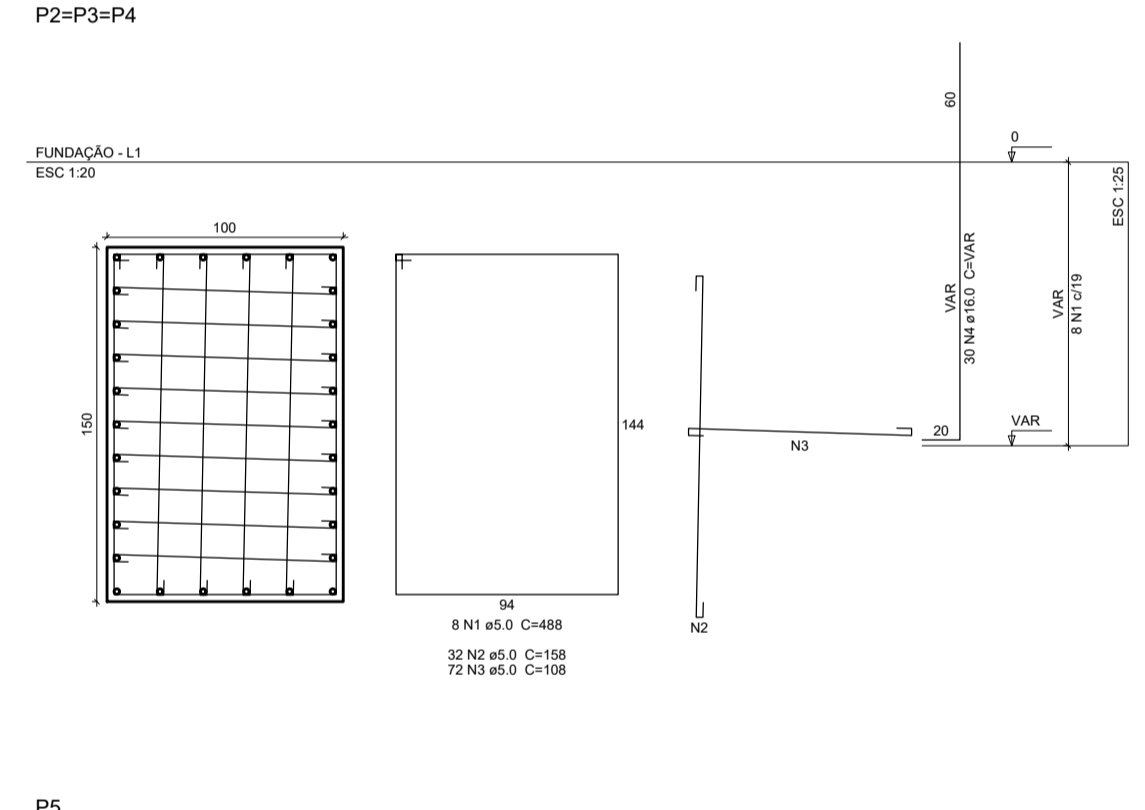
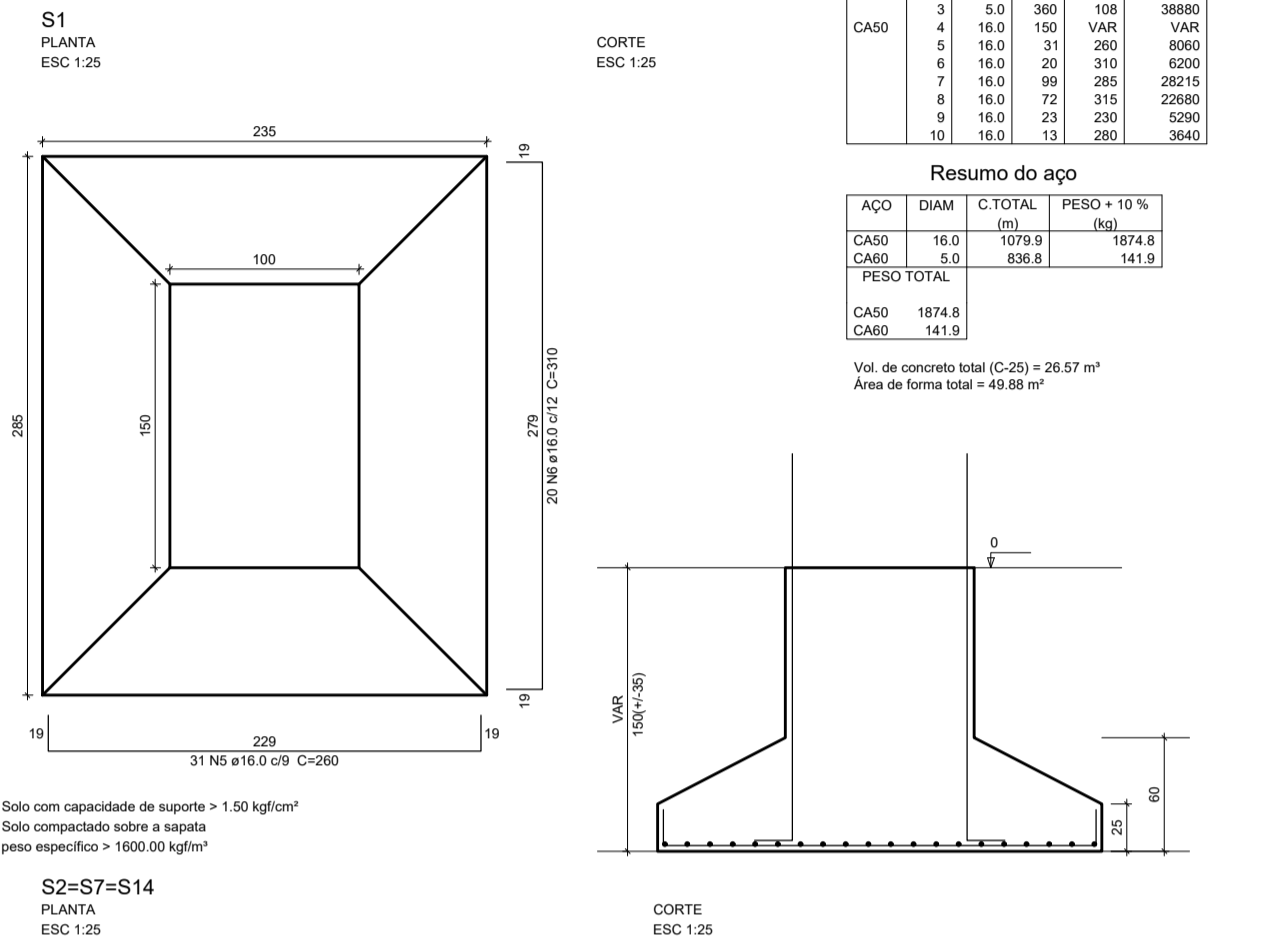
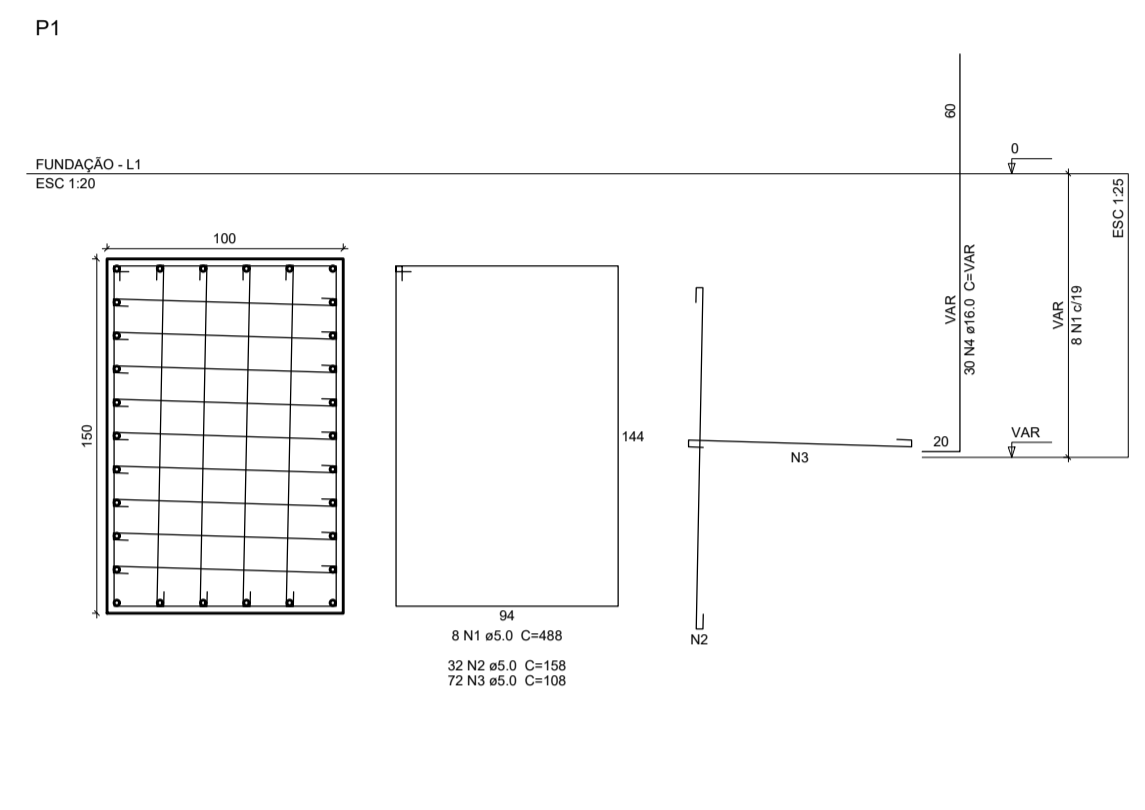
**Relação do aço**

S1	3x57	58			
ACO	N	DIAM	Q	UNIT	C TOTAL
CABO	1	5,0	40	488	19520
CABO	2	5,0	160	158	25280
CABO	3	5,0	360	108	38880
CABO	4	10,0	100	VAR	VAR
CABO	5	10,0	31	260	8060
CABO	6	10,0	20	310	6200
CABO	7	10,0	99	285	28215
CABO	8	10,0	12	315	3780
CABO	9	10,0	23	230	5290
CABO	10	10,0	13	280	3640

**Resumo do aço**

ACO	DIAM	C TOTAL	PESO * 10 <sup>3</sup>
CABO	5,0	1079,3	104,1
CABO	10,0	338,8	34,1
<b>PESO TOTAL</b>			<b>138,2</b>

Vol. de concreto total (C-25) = 26,57 m<sup>3</sup>  
 Área de forma total = 49,88 m<sup>2</sup>



PROJEÇÃO DA ESTRUTURA ( SAPATAS, PILARES E VIGAS ).  
 Sem escala

PROJETO ESTRUTURAL  
 DA PASSARELA DA PRAÇA

PROJETO DAS FUNDAÇÕES E PILARES

PRANCHA  
**01/04**

PROJETO: PREFEITURA DE BOA SERRA  
 INVENÇÃO: PRANCHA SAÚDE 404

PROJETADE: DIEGO S4054250

DATA: 21/07/2019

ESCALA: INDICADAS